

 PreSonus

Studio One® Pro

Quick Start Guide

V7.0

Table of Contents

1	Welcome to Studio One Pro 7! – 1
1.1	Introduction – 1
1.2	System Requirements – 1
1.3	Installation – 1
1.3.1	Creating a User Account – 1
1.3.2	Register, Download, and Install Studio One Pro – 2
1.4	Activation – 2
1.4.1	Activating Studio One Pro – 3
1.4.2	Online Activation – 3
1.4.3	Offline Registration and Activation – 4
1.5	Content Installation – 4
1.5.1	Installing Add-On Content – 4
1.6	Melodyne – 5
1.6.1	Installing Melodyne – 5
1.6.2	Authorizing Melodyne Essential – 5
2	Device Set up – 6
2.1	Set Up Your Audio Device – 6
2.2	Set Up Your MIDI Keyboard – 6
3	Helpful Tips – 8
3.1	New... – 8
3.2	Smart Templates – 8
3.3	Info View – 8
3.4	Reference Manual – 8
3.5	Key Commands for Migrating Users – 8
3.6	Getting Additional Help And Connecting with Fellow Studio One Pro Users – 9

1 Welcome to Studio One Pro 7!

1.1 Introduction

Welcome to PreSonus Studio One Pro 7! Thank you for purchasing Studio One Pro. We want to make sure you have a great first experience with this product, so please read the following information carefully to ensure you have a successful installation.

1.2 System Requirements

We make every effort to ensure that Studio One Pro will run well on the widest variety of computers possible. Please review these specifications to determine compatibility with your system.

macOS® (12.4 or higher) systems

- macOS® 12.4 (Monterey) or higher (64-bit only)
- Intel® Core™ i3 / Apple® M1 processor or better

Windows® systems

- Windows 10 22H2
- Windows 11 22H2 or higher (64-bit only)
- Intel® Core™ i3/AMD A10 processor or better

Linux (Public Beta)

- Requires Ubuntu 23.10 with Wayland session
- Intel® Core™ i3 / AMD A10 processor or better
- Vulkan 1.1 or OpenGL ES 2 compatible graphics driver

Additional Requirements (all Systems)

- Internet connection (needed for installation and activation)
- Monitor with 1280 x 768 resolution (high-dpi / Retina monitor recommended)
- Multi-touch enabled monitor with TUIO support is required for touch operation
- Content storage:
 - 8 GB RAM minimum
 - 40 GB free hard drive space (Studio One Pro)

1.3 Installation

The method you use to install Studio One Pro depends on how you purchased it.

Retail Purchase: If you bought Studio One Pro in a retail box and received a Product Key in the box, you'll register the key and then download Studio One Pro, and then activate it online upon first launching the product.

Direct Purchase from Shop.PreSonus.com: If you bought the software directly from <http://shop.presonus.com>, the Studio One Pro installation download is added to your user account and can be found under recent purchases on your My.PreSonus.com home page. Activation happens online after first launching the product.

1.3.1 Creating a User Account

If you bought Studio One Pro from our website, you already have a MyPreSonus account. If you do not yet have a MyPreSonus account, you'll need to create one.

Beyond being a requirement to download and activate the latest version of Studio One Pro 7, there are many benefits to creating a MyPreSonus account, including easy access to additional documentation and other content files, access to the user forums, latest tips and product videos, and the ability to easily create a technical support ticket.

To create a user account, go to: <http://my.presonus.com>. On that web page, click **Create My PreSonus Account**, then fill out the provided form or connect MyPreSonus to your Facebook, Google, or LinkedIn account, and then click **Create My PreSonus Account** again to create your new account.

Once you create your account, a verification email from PreSonus is automatically sent to the email address you provided. Click on the link in the email to activate your account. You are now ready to download and install Studio One Pro.

You should receive this email within minutes of creating your account—if you do not receive our email, please contact support@presonus.zendesk.com to have your account manually activated.

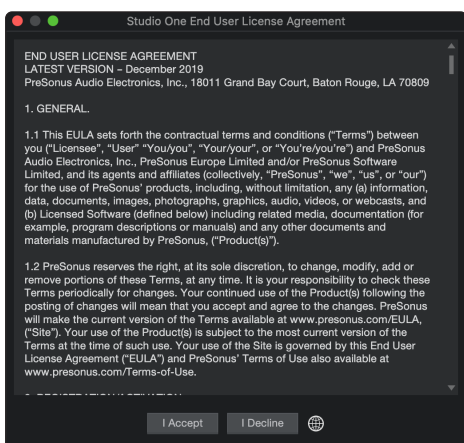
If your computer is not connected to the internet, you can still download and activate Studio One Pro by using a different computer that does have internet access, as described in the **Offline Activation** section below.

1.3.2 Register, Download, and Install Studio One Pro

To download the Studio One Pro installer, log into your MyPreSonus account at <http://my.presonus.com>. Click the **Register a Product** button, select **Software or Add-on** and enter your Product Key. If you bought an upgrade to Studio One Pro from our website, the Product Key is sent to you by email. If you bought a boxed version of Studio One Pro, the Product Key is included in the box.

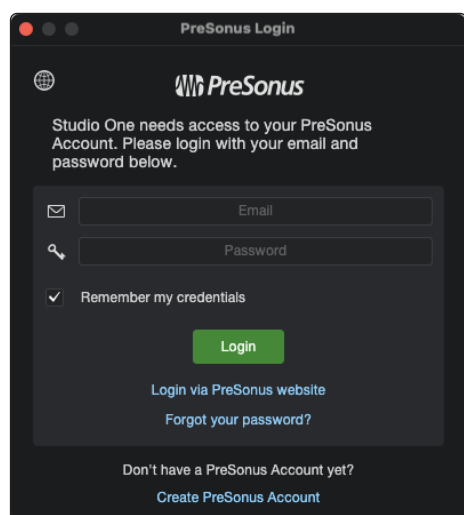
Once your copy of Studio One Pro is registered, you have the option to click a button “View My Product”. This takes you straight to that product’s detail page. On that page you’ll see a **Download Installer (Mac or Windows) button**. Click this to download the primary Studio One Pro installer. The correct installer for the operating system you are currently running will be automatically downloaded. If you are downloading from a different computer (i.e. Mac vs PC) than that which you plan to install Studio One Pro, and need an installer for a different operating system, please click **Show All Systems** to access the correct download. Once the installer has downloaded, run it and follow all onscreen instructions.

1.4 Activation

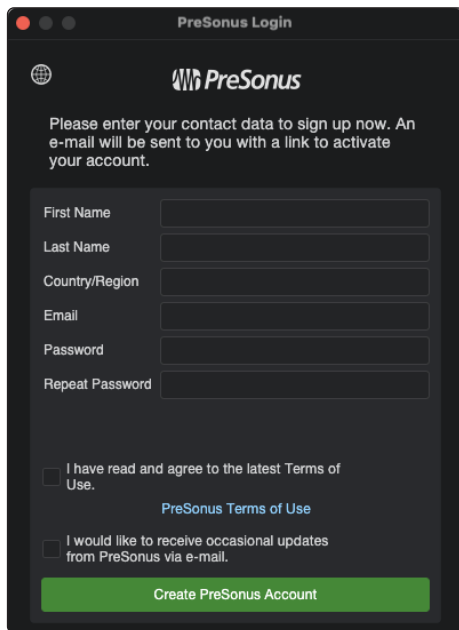


Studio One Pro must be activated for use on your computer. Once installation is complete, launch Studio One Pro. The License Agreement appears.

I Accept to accept the agreement, and the PreSonus Login window is then displayed.



If you already have a user account, enter your MyPreSonus username and password, and press **Login** to log into your account.



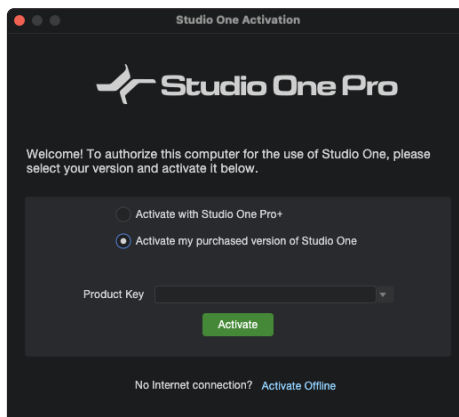
The screenshot shows the 'PreSonus Login' window. At the top, it says 'PreSonus Login' and features the PreSonus logo. Below the logo, there is a message: 'Please enter your contact data to sign up now. An e-mail will be sent to you with a link to activate your account.' The form contains several input fields: 'First Name', 'Last Name', 'Country/Region', 'Email', 'Password', and 'Repeat Password'. Below these fields are two checkboxes: 'I have read and agree to the latest Terms of Use.' with a link to 'PreSonus Terms of Use', and 'I would like to receive occasional updates from PreSonus via e-mail.' At the bottom of the form is a green button labeled 'Create PreSonus Account'.

If you need to create an account and your computer is connected to the Internet, click on **Create MyPreSonus Account**. Fill in your desired user-account details, and click **Create PreSonus Account**.

1.4.1 Activating Studio One Pro

In most cases, Studio One Pro will self-activate the first time you log in with your MyPreSonus account. In the rare instance where you have multiple licenses of the same Studio One Pro version registered to the same MyPreSonus account, you will need to select which license to activate. If you have not already done so, launch Studio One Pro and open the Studio One/Studio One Activation menu.

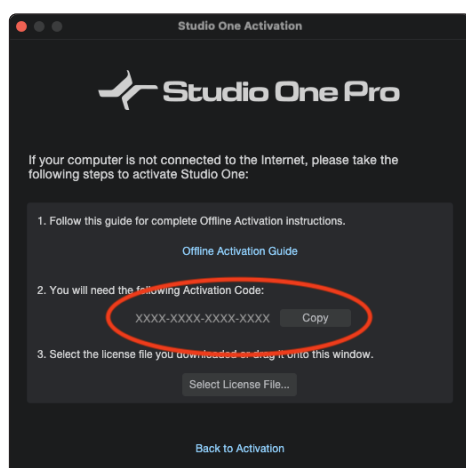
1.4.2 Online Activation



The screenshot shows the 'Studio One Pro Activation' window. It features the Studio One Pro logo at the top. Below the logo, there is a message: 'Welcome! To authorize this computer for the use of Studio One, please select your version and activate it below.' There are two radio button options: 'Activate with Studio One Pro+' and 'Activate my purchased version of Studio One'. The second option is selected. Below the radio buttons is a 'Product Key' input field with a dropdown arrow. At the bottom of the form is a green button labeled 'Activate'. At the very bottom of the window, there is a link: 'No Internet connection? Activate Offline'.

If the computer on which Studio One Pro has been installed is connected to the Internet, select the **Activate my purchased version of Studio One Pro** option. If the Product Key is not already entered, type or paste in the Product Key you received via email (or with your package, if using a retail boxed or education version of Studio One Pro). Click the **Activate** button to finish the activation process.

1.4.3 Offline Registration and Activation



If the computer on which Studio One Pro has been installed is not connected to the Internet, click **Activate Offline** in the Studio One Activation window, and make note of the Activation Code shown in the instructions. You will need a USB flashdrive, a copy of your product key, and a copy of the activation code.

Then, go to a computer with an Internet connection, visit <http://my.presonus.com>, and log in to your account. Click the **Register a Product** button, select **Software or Extensions**, and enter your product key, as printed on the Studio One Pro package or provided via email. Click on **Register**, and you are taken to your Software list.

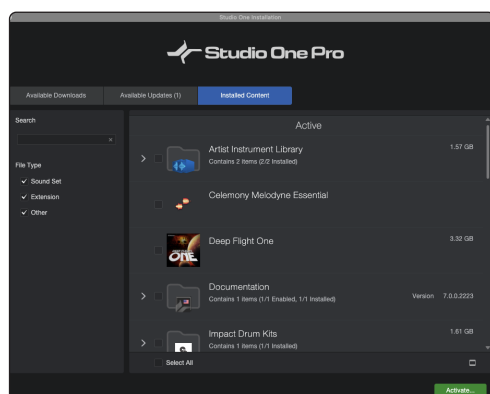
Select the product you just registered from your Software list, and then click **Offline Activation** on the next page. Click **Activate Software**, and enter the Activation Code provided by

Studio One Pro. You may also enter a computer name to help you keep track of your five allowed activations.

Click **Offline Activation** again, and then click **Download License** to download your User License file. Save this file to some sort of external media (such as a flash drive or CD-R), and then copy the file to the computer on which Studio One Pro is installed.

In Studio One Pro, navigate to the Studio One/Studio One Activation dialog again, click **Activate Online**, then click **Select License File** to load your user license file, activating Studio One Pro.

1.5 Content Installation



Studio One Pro comes with many audio loops and instruments that are organized into Sound Sets, as well as demo songs and tutorial videos. To install the Sound Sets and demo/tutorial material, launch Studio One Pro and open the *Studio One/Studio One Installation* menu.

In the Studio One Installation menu, you can choose to download all selected content from your MyPreSonus Account, or navigate to downloaded content in your file system using the **Install from File** button. If you wish to install any further content at a later time, you can always return to *Studio One/Studio One Installation* window to do so.

By default, all essential packages included with your edition of Studio One Pro are selected for installation in the Recommended Installation tab. You can set the install location to any desired location on your computer using the **Install Options** menu. When you've chosen your location, click on **Install** to continue.

After installation, you can find all of the installed content in Studio One Pro's Browser. Demos and tutorials can be accessed from the Start page. Instrument presets are listed under the related instrument in the Instruments tab of the Browser, as well as the preset browser in the plug-in window.

1.5.1 Installing Add-On Content

If you need to install additional content you've purchased from <http://Shop.PreSonus.com> alongside Studio One Pro, or as an Add-on at a later time, simply locate and select it from the Studio One Pro Installation window, filtered by the "purchased content" tickbox in the search area. Alternatively, download the content from your <http://my.presonus.com> account. To install the content to the default user location, simply double-click or drag the content onto the Studio One Pro window.

If you wish to store the Sound Set content in another location, place it there, and add that location to *Studio One/Options/Locations* (macOS: *Preferences/Options/Locations*). There, you can add new locations for Sound Sets, Instruments, and 3rd-party plug-ins.

1.6 Melodyne

We have partnered with Celemony to bring you access to their Grammy-winning Melodyne, a useful timing and pitch-correction and manipulation tool that integrates closely with Studio One Pro. Studio One Pro comes with a full Celemony Melodyne Essential license.

1.6.1 Installing Melodyne

In Studio One Pro, navigate to *Studio One/Studio One Installation*. Check the box next to the version of Melodyne that is listed to select it. Once selected, you can click [Install] to install Melodyne.

Click the [Claim Product Key] button next to the Melodyne listing to claim your Melodyne product key. The key is displayed, and you can click the [Copy] button to copy it to the clipboard.

1.6.2 Authorizing Melodyne Essential

Before you can use Melodyne Essential, you must first launch the standalone Melodyne application that is installed along with the plug-in versions. Once opened, press the [Enter Serial Number] button, then type or paste in the provided Melodyne Essential serial number, and press [Continue]. You are then prompted to register your copy of Melodyne, by clicking [Create myCelemony account]. Follow the prompts to register your copy of Melodyne Essential.

Once registration is finished, you can quit the standalone Melodyne application, and then launch Studio One to begin using Melodyne Essential.

Click **Install** to install and authorize Melodyne.

2 Device Set up

2.1 Set Up Your Audio Device

Studio One Pro automatically selects an audio device to use for audio input and output, pulling from a list of devices currently installed on your computer. If you have a PreSonus audio interface, it is selected automatically.

To select a different device, navigate to *Studio One/Options/Audio Setup* (macOS: *Preferences/Options/Audio Setup*) or click **Configure Audio Device** under Setup on the Studio One Pro Start Page.

Follow these steps to configure your audio device for use in Studio One Pro:

1. Select your chosen device from the Audio Device drop-down menu under the *Studio One/Options/Audio Setup* (macOS: *Preferences/Options/Audio Setup*) menu.
2. Some devices offer a selection of configuration options. If your connected device has those controls, you can click on the **Control Panel** button next to the device selection drop-down menu and make your changes within the device's control panel. If your device does not offer these options, the Control Panel button is greyed out.
3. Set Device Block Size (and on Windows, Internal Device Block Size as well) to fit your needs. Lower settings minimize latency, which is useful when tracking. Higher settings bring more latency, but give you additional processing power, for effects and instrument plug-ins.
 - **macOS:** Device Block Size is the audio device's buffer size, which has a direct impact on your audio device's performance. You can increase or decrease the Device Block Size by sliding the horizontal fader left or right. The appropriate setting depends upon your specific use of Studio One Pro.
 - **Windows:** Internal Block Size can be locked to the Device Block Size by checking the Lock box (checked by default). The Internal Block Size is the software buffer size, which has a direct impact on your computer system and on Studio One Pro's performance.

If unlocked, the Internal Block Size can be selected from a drop-down menu. If you are unsure of the best setting, leave Internal Block Size locked to Device Block Size.

For DSP-powered effects and virtual instruments, such as Universal Audio UAD hardware, locking the Internal Block Size of your Audio Device is critical to ensure proper operation.
4. By default, Studio One Pro's processing precision is set at Single (32-bit floating point). You may choose double precision (64-bit floating point) from the Process Precision drop-down menu.
5. If your computer has multiple processors or processing cores, Enable Multi-Processing is checked by default. Unless you experience performance issues, it is recommended you leave this at the default setting for best performance.
6. When the aforementioned settings are selected, your system's current total input and output latency, sample rate, and bit depth is reported below the Audio Setup menus.

For more detailed information on Audio Device and I/O setup, refer to the Reference Manual in the Help menu of Studio One Pro.

2.2 Set Up Your MIDI Keyboard

A MIDI keyboard controller is a hardware MIDI device that is used for playing and controlling other MIDI devices, virtual instruments, and software parameters. In Studio One Pro, MIDI keyboard controllers are referred to as Keyboards. Before recording a performance with a Keyboard, the MIDI keyboard controller must first be set up in Studio One Pro. Once set up, it will be available at all times for use in Studio One Pro.

To set up your Keyboard, navigate to *Studio One/Options/External Devices* (macOS: *Preferences/Options/External Devices*) or click **Configure External Devices** under Setup on the Studio One Pro Start Page and follow these steps:

1. In the External Devices section, click on the **Add...** button.
2. Choose your device from the predefined device list or set this to New Keyboard if you do not see your device in the list.
3. If set to New Keyboard, you may wish to type in a Manufacturer Name and a Device Name in the appropriate fields. This makes identifying your Keyboard easier.

4. Specify which MIDI channels to use to communicate with this Keyboard. All MIDI channels are selected by default.

If you are unsure of the appropriate MIDI channels to use, just leave this at the default setting.

5. Engage Split Channels if you would like to create a separate Instrument Track input for each MIDI channel from the Keyboard.
6. Specify the device to which the Keyboard is sending and the device from which it is receiving via Studio One Pro. Select your device driver name from the drop-down menu for both Receive From and Send To.
7. You can choose to use this Keyboard as your Default Virtual Instrument Input by checking the appropriate box. If you are using only one Keyboard with Studio One Pro, you should check this box.

Your Keyboard is now ready for use in Studio One Pro.

For more detailed MIDI Device setup information, refer to the Studio One Pro Reference Manual in the Help menu of Studio One Pro.

3 Helpful Tips

3.1 New...

From the Start Page, click New... to create a new Song, Show, or Project.

- A **Song** is where you can record, edit, arrange, and mix audio and note data.
- A **Show** is where you can perform live, using Studio One Pro for backing tracks and more.
- A **Project** is where multiple Songs or audio files can be arranged and mixed on a single timeline for mastering purposes.

3.2 Smart Templates

Smart Templates create a new Document optimized for the type of work you want to do, with helpful interactive tutorials to help you learn Studio One Pro.

For example, the “Create Content” Template creates a new Song file with a Video Track; two tracks for voiceover; a stereo track for Music/FX; and processing effects appropriate for podcasting already placed in the Console Channels.

There are Smart Templates for many popular creative tasks: Play Now, Record Now, Produce Beats, and more.

3.3 Info View

The Info View panel, accessed via the Question Mark icon in the top toolbar on the Song and Project pages, displays all possible actions for the selected mouse tool, as well as showing the possible modifiers and their related actions. Various controls in the Studio One Pro interface and included plug-ins also display information in the Info View when you hover the mouse pointer over them. From Info View, you can press F1 on your keyboard to jump directly to related sections of the Studio One Pro reference manual.

3.4 Reference Manual

The Studio One Pro reference manual is fully integrated into Studio One Pro and can be accessed from the Help menu (Studio One Pro Reference Manual) or by pressing F1 on your keyboard. A table of contents is shown in the left column of the help window. In addition you will find a complete index, cross-reference links inside the text and a useful search option. The English Reference Manual is installed by default, other languages are available from the Studio One Pro Installation menu.

3.5 Key Commands for Migrating Users

If you are migrating from another DAW to Studio One Pro, you might find it helpful to switch the key-command set to one specifically created to make the transition from another DAW easier.

In the *Studio One/Options/General/Keyboard Shortcuts* (Mac OS: *Preferences/Options/Keyboard Shortcuts*) menu, you will find a heading called Keyboard Mapping Scheme. Here, you can select from keyboard maps for several DAWs, including Pro Tools®, Cubase, and Logic®; select a map, and Studio One Pro will recognize and apply common key commands from that DAW. You can then customize the key-commands to fit your workflow.

The key commands used for each DAW can be viewed in the Key Command menu and can be exported in several file types for external viewing.

3.6 Getting Additional Help And Connecting with Fellow Studio One Pro Users

In Studio One Pro 7, Help and the Reference manual are both context sensitive and will answer your questions in most cases. If you need additional assistance:

1. Please consult the online Knowledgebase, located here: <http://support.presonus.com/forums>
2. Ask your peers for help in the PreSonus forums: <https://forums.presonus.com>. The Forums are also a great place to connect with your fellow Studio One Pro users.
3. You can also file a support ticket from the link found on the Knowledgebase or from within your MyPreSonus account.

We hope you enjoy Studio One Pro!

Added bonus: PreSonus' previously Top Secret recipe for...

Chicken and Andouille Gumbo

Ingredients:

- 1 C All-Purpose flour
- ¾ C Vegetable Oil
- 1 large onion (diced)
- 1 small onion (quartered)
- 6 celery stalks (diced)
- 1 large green bell pepper (diced)
- 3 cloves garlic (2 minced, 1 whole)
- 1 lb link Andouille sausage
- 4 Chicken leg quarters
- 4 qt water
- 4 bay leaves
- 1 tsp thyme
- 1 tsp Old Bay seasoning
- 1-2 C frozen okra, sliced
- ¼ C fresh parsley, minced
- 6-8 eggs (optional)

Cooking Instructions:

1. In a large pot, combine whole chicken leg quarters, water, quartered onion, Old Bay, 2 bay leaves and 1 whole clove garlic. Cover and bring to a low boil. Simmer stock until chicken is falling off the bone. Remove the chicken and set aside. Discard the onion, bay leaves, and garlic, reserving the liquid.
2. In a heavy saucepan, heat 1 Tbsp of the oil on medium high heat and brown the andouille until it is cooked through. Set aside sausage for later.
3. In the same saucepan, add and heat remaining oil. Slowly add flour 1-2 Tbsp at a time, stirring continuously. Continue cooking and stirring the roux until it is a dark brown (it should look like melted dark chocolate). Be careful to not to get the oil too hot or the flour will burn and you'll have to start over.
4. Once roux has reached the correct color, add diced onion, celery, green pepper, and minced garlic. Cook until vegetables are very tender. Do not cover.
5. Slowly add 1 quart of chicken broth and bring to a low boil, stirring constantly.
6. Transfer roux mixture to a soup pot and bring to low boil. Do not cover, the roux will settle on the bottom of the pot and burn.
7. Add remaining chicken broth, bay leaves, and thyme. Simmer for 30 minutes.
8. While gumbo is simmering, debone and shred chicken and slice the andouille.
9. Add chicken and andouille to gumbo and return to a simmer. Simmer for 30-45 minutes.
10. Stir in frozen okra and parsley and bring to a rolling boil.
11. **Optional:** Crack one egg into a teacup and quickly pour into the boiling gumbo. Repeat with the other eggs being careful not to cluster them too closely. After all the eggs have risen back to the surface, reduce heat and simmer.
12. Correct seasoning with salt and pepper (red, white and/or black) if necessary.
13. Serve over rice with potato salad.

Serves 12

Unless otherwise indicated below, the trademarks, service marks, and logos contained herein (the "Marks") are owned or controlled by PreSonus Audio Electronics, Inc., or are used herein under license. Be sure to check out www.preconus.com for the latest feature lists, compatibility, and computer requirements.

©2024 PreSonus Audio Electronics, Inc. All Rights Reserved.

AudioBox USB, Capture, CoActual, EarMix, Eris, FaderPort, FireStudio, MixVerb, Notion, PreSonus, PreSonus AudioBox, QMix, RedLightDist, SampleOne, Sceptre, StudioLive, Tumbler, Tricomp, WorxAudio, Revelator and the Wave Logo are trademarks of PreSonus Audio Electronics, Inc., and/or its affiliates, some of which are registered in the US and other countries.



ASIO is a trademark and software of Steinberg Media Technologies GmbH. VST is a trademark of Steinberg Media Technologies GmbH.

Dolby, Dolby Atmos, and the double-D symbol are registered trademarks of Dolby Laboratories Licensing Corporation.

Manufactured under license from Dolby Laboratories. Confidential unpublished works.

Copyright © 2024 Dolby Laboratories. All rights reserved.

Mac, macOS, iOS, and iPadOS are registered trademarks of Apple, Inc., in the U.S. and other countries. Windows is a registered trademark of Microsoft, Inc., in the U.S. and other countries.

Other product names mentioned herein may be trademarks of their respective companies. All specifications subject to change without notice. Bon temps y'all; let's make some music! Part# 70-62000271-A